



**ALASKA DIVISION OF HOMELAND
SECURITY & EMERGENCY MANAGEMENT**
SITUATION REPORT
25-24• January 24, 2025



Toll-Free 1.800.478.2337

Anchorage Area 907.428.7000

SEOC 907.428.7100

<p><u>SEOC Preparedness Level</u> Level 1-Routine Operations</p>	<p>http://ready.alaska.gov</p>	<p><u>National Terrorism Advisory System:</u> Read the NTAS Bulletin here</p>
<p><u>Maritime Security (MARSEC)</u> Level:1- Minimum Appropriate Security Measures</p>	<p>WHO Novel Coronavirus Pandemic (COVID-19): 2019 Novel Coronavirus</p>	<p><u>Alaska Military Installation Force Protection</u> <u>Level:</u> FPCON Bravo</p>

(Significant changes from previous situation reports are red.)

Significant Issues:

NONE

Department of Health (DOH):

For current information, see: <https://health.alaska.gov/dph/Pages/default.aspx>
<https://health.alaska.gov/dph/Emergency/Pages/prepared/default.aspx>

NTAS Bulletin:

The U.S. Department of Homeland Security issued an updated National Terrorism Advisory Bulletin on May 24, 2023. The current and expired bulletins can be viewed at the below link.
<https://www.dhs.gov/national-terrorism-advisory-system>

Travel Alerts and Conditions:

- **Avalanche at MP 219 Parks Highway. Roadway is CLOSED in both Directions - 10:00 am.**
- **Adverse winter weather for Fairbanks area travel not advised. If traveling slow down and use caution**

For current driving conditions, dial 511 or visit: <https://511.alaska.gov/>

Barry Arm Landslide / Tsunami Risk:

For the latest information on the Barry Arm Landslide and Tsunami risk, click here:
<https://dggs.alaska.gov/hazards/barry-arm-landslide.html>

Earthquakes:

United States Geological Service (USGS) Earthquake Information: <http://earthquake.usgs.gov/>
National Tsunami Warning Center: <http://tsunami.gov/>

Alaska Volcanoes:

Great Sitkin Alert Level: **Watch** and Aviation Color Code: **Orange**

Mt. Spurr Alert Level: **Advisory** and Aviation Color Code: **Yellow**

For Alaska Volcano updates, go to: <https://www.avo.alaska.edu/>

Air Quality Index (AQI) Advisories:

For the most up-to-date Air Quality Index Advisories:

<http://dec.alaska.gov/Applications/Air/airtoolsweb/Home/Index>

Spills of Oil and Hazardous Substances:

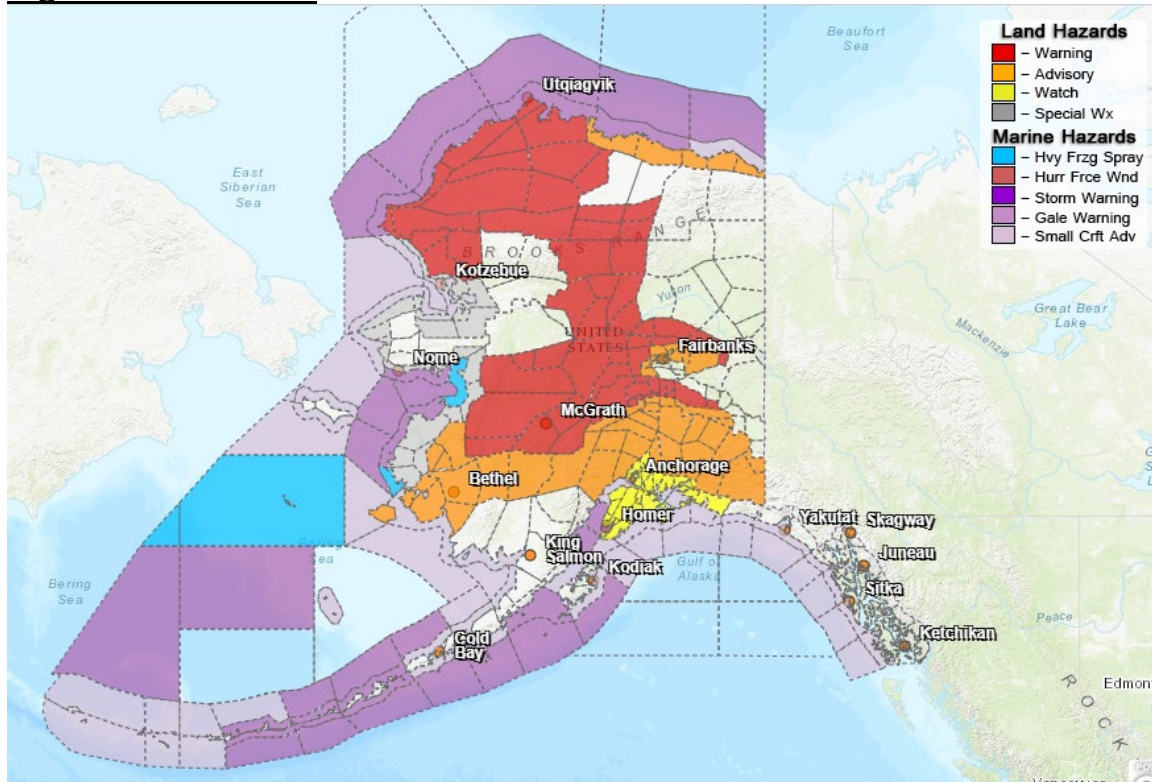
The Alaska Division of Environmental Conservation (ADEC) Spill Prevention and Response page is located at: <https://dec.alaska.gov/spar/>

Alaska Cyber Security Information:

State Employees may sign up for cybersecurity notifications and alerts at:

<https://oit.alaska.gov/security>

Significant Weather:



Special Weather Statement:

- **Kivalina and Red Dog Dock, Lower Kobuk Valley, Baldwin Peninsula, Northern Seward Peninsula, Shishmaref, Bering Strait Coast, Southern Seward Peninsula Coast, Eastern Norton Sound and Nulato Hills, Yukon Delta Coast-possible water over ice along beaches Thursday night through Friday for Coastal Regions.**

Winter Storm Warning:

- **Central Interior, Middle Yukon Valley, Lower Yukon and Innoko Valleys, North Slopes of the Western Alaska Range, Upper Kuskokwim Valley-in effect until 3am Monday.**
- **Western Arctic Coast, Northwest Arctic Coast, Northern Arctic Coast, Western Arctic Plains, Howard Pass and the Delong Mountains-in effect until 3am Saturday.**
- **South Slopes of The Central Brooks Range, Upper Koyukuk Valley, Dalton Highway**

Summits-until 6am Saturday.

- **White Mountains and High Terrain South of the Yukon River-until 9am on Sunday.**
- **Lower Yukon River- until 9am on Saturday.**
- **Noatak Valley- until 3am Saturday.**

Winter Weather Advisory:

- **Eastern Alaska Range South of Trims Camp, Southern Denali Borough-in effect until 3am Sunday.**
- **Upper Chena River Valley, Goldstream Valley and Nenana Hills, Chatanika River Valley, Two Rivers, Fairbanks Metro Area, Nenana, Goldstream River Valley- until 9am Sunday.**
- **Central Beaufort Sea Coast, Eastern Beaufort Sea Coast-from 3pm this afternoon until 3pm Saturday.**
- **Copper River Basin- from 1pm this afternoon to 9am Sunday.**
- **Susitna Valley-until 9am Sunday North of Talkeetna.**
- **Southern Denali Borough- in effect until 3am Sunday.**
- **Lower Kuskokwim Valley-in effect from 3pm this afternoon until 3pm Sunday.**
- **Kuskokwim Delta- in effect from 3pm this afternoon to 3pm Sunday.**

Winter Storm Watch:

- **Eastern Alaska Range South of Trims Camp- in effect until 3am Sunday.**
- **Central Interior-from 3pm this afternoon to 6am Monday.**

High Wind Warning:

- **Northern Denali Borough, Eastern Alaska Range North of Trims Camp-from 3am Friday to 9pm Saturday.**
- **Central Brooks Range- until 6pm this evening.**
- **Northern Denali Borough, Eastern Alaska Range North of Trims Camp-in effect until 9pm Saturday.**

High Wind Watch:

- **Anchorage-late tonight through Sunday morning.**

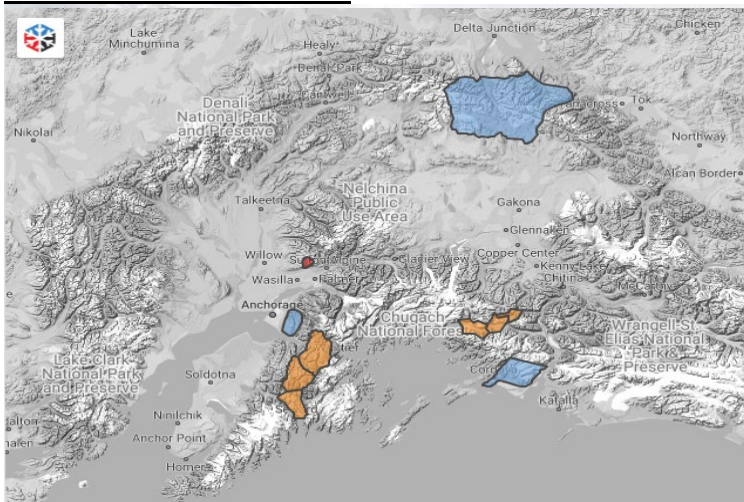
Flood Watch:

- **Anchorage, East Turnagain Arm, Matanuska Valley, Western Kenai Peninsula, Western Prince William Sound, Northeast Prince William Sound, Southeast Prince William Sound, Susitna Valley-in effect from Friday morning through Monday morning.**

For more information and the most current Weather, Watches/Warning/Advisories go to:

<https://www.weather.gov/arh/>

Avalanche Conditions:



Summit Lake – Low below 1,000', Moderate 1,000' to 2,500', Considerable above 2,500'.
Turnagain Pass – Low below 1,000', Moderate 1,000' to 2,500', Considerable above 2,500'.
Seward and Lost Lake- Low below 1,000', Moderate 1,000' to 2,500', Considerable above 2,500'.
Valdez Maritime, Intermountain, and Continental– Considerable at all levels.
Hatcher Pass- Considerable below 2500', High above 2,500'.

For more information and the most current avalanche conditions, go to: <https://alaskasnow.org/>

The Next Situation Report will be on **January 27, 2025**. An interim report will be prompted by a significant change in the situation or the threat level. This report is posted on the internet at <https://ready.alaska.gov/sitrep>.

To register for email distribution, PLEASE go to:

<http://list.state.ak.us/mailman/listinfo/dhsem.situation.report>.

Direct questions regarding this report to the SEOC at 907-428-7100 or seoc@alaska.gov.